

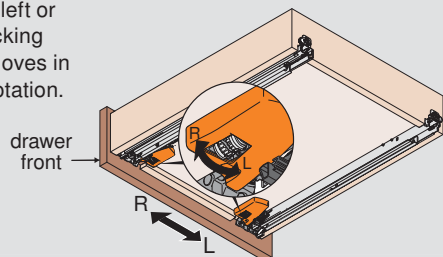
TANDEM plus BLUMOTION 569H/569.

New side adjustment

Rotate side adjustment left or right equally on both locking devices. Drawer front moves in the same direction as rotation.

with locking device

T51.19xx

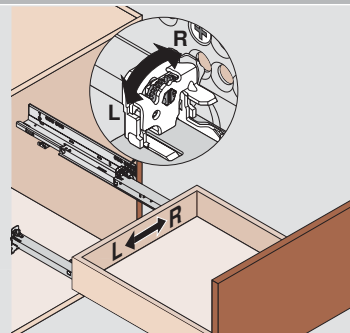


Maximum 1.5 (1/16") to left or right (tool-free)

NOTE: Side adjustment not available on T51.18xx locking devices

New rear side adjustment

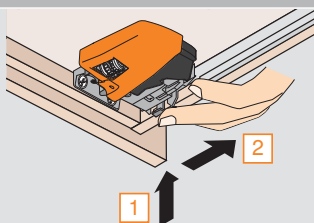
After front side adjustment is made with the locking devices, rotate the rear side adjustment left or right to re-align the back of the drawer box with the front. Drawer back moves in the same direction as rotation.



Maximum 1.5 (1/16") to left or right (tool-free)

Height adjustment

- 1 Press up on adjustment tab
- 2 Push towards back of drawer

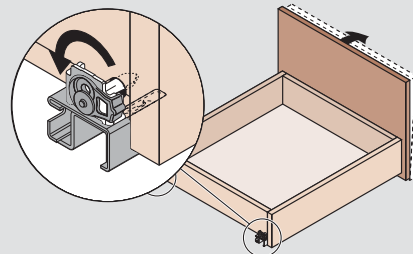


Maximum 3 (1/8") rise of drawer front (tool-free)

NOTE: Height adjustment available on all TANDEM locking devices

Tilt adjustment

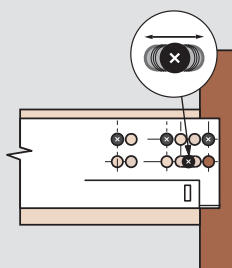
Rotate the tilt adjustment lever on the rear of each runner to tilt the top of the drawer front forward.



Maximum 5 (3/16") rise of drawer back (tool-free)

New depth adjustment on runner

TANDEM 569 runners feature elongated holes that allow ± 4.5 (3/16") depth adjustment.



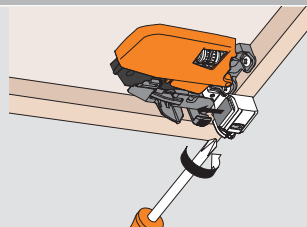
New depth adjustable locking device

Locking device

T51.1901.PS

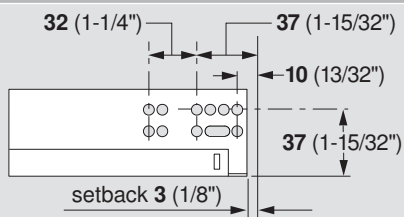
with side, height and depth adjustment

Turning the adjustment screw allows for up to a +2.5 (3/32") out adjustment



NOTE: For T51.1901.PS setback in inset applications, see the TANDEM brochure

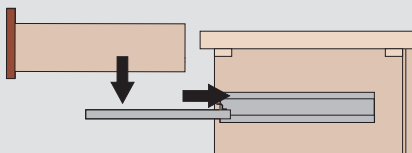
New profile setback



NOTE: Hole locations to the face of the cabinet stay the same. For inset applications see the TANDEM brochure.

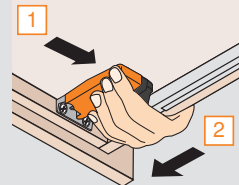
Drawer insertion

Place drawer on runners and close. The locking devices automatically engage with the runners.



Drawer removal

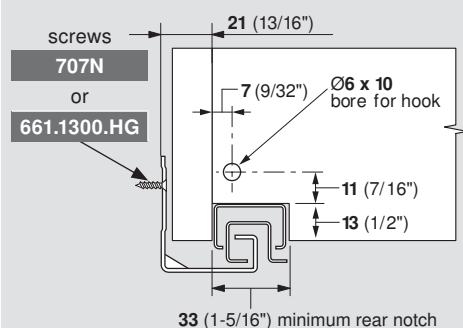
- 1 Squeeze orange handles on locking devices
- 2 Pull drawer straight out and up



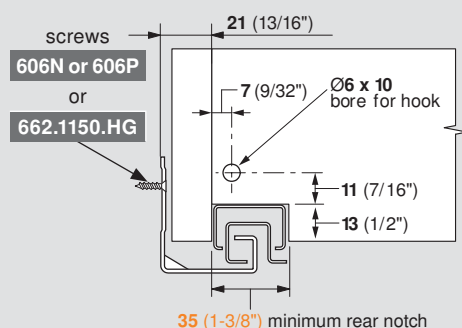
TANDEM plus BLUMOTION 569H/569.

Drawer preparation

568H/568. runners



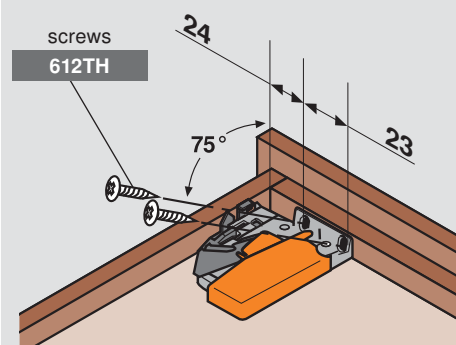
New 569H/569. runners



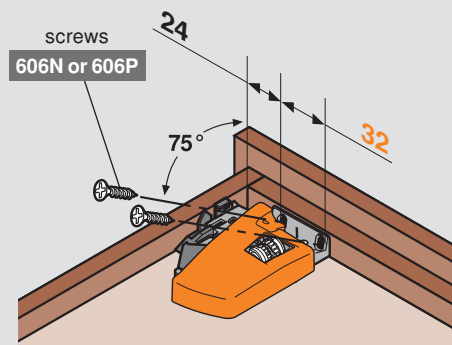
- No change to rear hook hole location, depth or diameter
- Rear notch width changes from 33 (1-5/16") to 35 (1-3/8")
- Mounting screws change from #7 head to #6 head wood or system screws

Locking devices

568 runners



New 569 runners



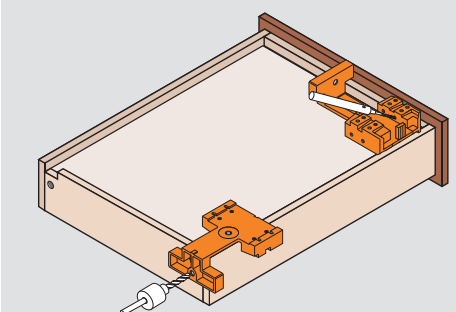
- 9 (11/32") difference in mounting hole location
- Mounting screws change from #6 truss head screws to #6 flat head wood screws

| | | | |
|-----------------|----------|-------------------------|----------|
| Locking devices | Part no. | Without side adjustment | T51.18xx |
| | T51.17xx | With side adjustment | T51.19xx |

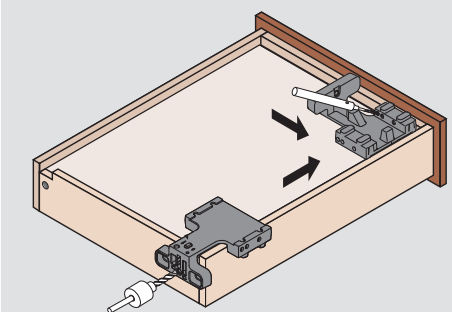
NOTE: T51.17xx locking devices cannot be used with new 569 runners. T51.18xx and T51.19xx locking devices cannot be used with 568 runners.

TANDEM template

568 runners



568 and 569 runners



- Color changes from orange to gray
- Hole locations change to accommodate new and old locking devices

| | | | |
|---------------------|-------------|---------------------|-------------|
| OLD TANDEM template | Part no. | 568 and 569 runners | Part no. |
| | T65.1000.02 | NEW TANDEM template | T65.1600.01 |